

# WPP-531-D-ADA-R-ST

**Weatherproof, Handsfree, Vandal Resistant, Rugged Speakerphones Built to Last**

CEECO model WPP-531-D-ADA-R-ST is a vandal resistant, weatherproof, handsfree speakerphone that offers dependable communication. The blue strobe light is available in steady on or flashing position. The speakerphone is manufactured with a puncture and moisture proof speaker, industrial grade electronic ringer, and automatic dialer. The ADA feature provides a LED that changes color to give the caller a visual indication of the call progress and the unit is also equipped with a Braille EMER plate. The speakerphone has a press to start/stop button for initiation or termination of phone calls, but will reset itself when the called party hangs up to prevent phone from being left in the off-hook condition. The speakerphone provides better emergency communication, since the user is not restricted to communicate via handset and the called party can hear conversation in local vicinity. The unit is built with a heavy duty cast aluminum housing and a high grade, 16 gauge stainless steel panel to eliminate rust and corrosion. The internal circuitry provides exceptional audio balancing and overall sound quality, as well as over-voltage protection to help guard against surging generated by various conditions including storms. This unit is an excellent choice for areas that need dependable emergency communication and require protection from the weather, abuse, or high volume use.



WPP-531-D-ADA-Y-ST



## WPP-531-D TELEPHONE

**Designed for Rugged and Outdoor Environments**

**Weatherproof Cast Aluminum Housing with Stainless Steel Panel Telephone**

**Puncture and Moisture Proof Speaker**

**Wall or Pole Mount**

**Steady On or Flashing Strobe Light**

**Line Powered**

**1 Year Warranty**

## OPTIONS

Omit -R	Black Housing TELEPHONE
-R-TEL	Red Housing TELEPHONE
-Y	Yellow Housing EMERGENCY
-Y-TEL	Yellow Housing TELEPHONE
-G	Gray Housing TELEPHONE
-PB	Pushbutton Latch Housing
-SS	Super Smart Features include: Voice Announcement (-VA), Auto Answer (-AA), and Remote Programming (-RP)
331-016	Spring Loaded Door
301-006	Pole Mounting Bracket

**CEECO has been providing telecom solutions since 1930. Our vandal resistant technology focuses on providing public communication solutions while reducing replacement and repair costs, lowering the customer's total cost of ownership. CEECO also offers custom design and branding to your specifications.**

**Our commitment to providing expert service and support extends beyond the warranty of our product. We offer service for the life of the product! CEECO is devoted to giving you the quality and service you deserve.**



**Providing Telecommunication Solutions Since 1930**

Communication Equipment  
& Engineering Company

<http://www.ceeco.net>

Email: [sales@ceeco.net](mailto:sales@ceeco.net)

519 SW Park Street

Okeechobee, FL 34972

Voice 863-357-0798

Fax 863-357-0006

# SPECIFICATIONS

## SPECIFICATIONS

INPUT POWER:	C.O. Line Powered
LOOP CURRENT:	30ma min to 80ma max
IMPEDANCE:	600 ohms
SIGNALING	DTMF, 70ms tone, 50 ms spacing
ENVIRONMENTAL:	Temperature 0°C to 50°C Humidity 20%-90% non-condensing
OUTPUT PROGRAMMING	Via DTMF keypad
RINGER EQUIVALENCY:	0.7A
FACEPLATE:	Brushed 16 ga. Stainless Steel Cast Aluminum
ENCLOSURE:	
DIMENSIONS:	
HOUSING:	12 5/8" H x 9 1/2" W x 8" D (including door)
PANEL:	11 1/4" H x 7 1/16" W
MOUNTING:	4 Holes spaced 8" x 5 7/8"
WEIGHT:	16 lbs.
MEMEORY RETENTION:	Non-volatile
FCC REGISTRATION:	BW8USA-73021-MT-E
UL LISTED NO.:	60F5
TYPE JACK:	RJ11C
<u>ACCESSORIES:</u>	
301-064	Security Tool

## WARRANTY POLICY

### GENERAL

CEEEO guarantees its products to be free from defects in material and workmanship for a period of 365 days from the date of original purchase. CEEEO's obligation under this warranty is limited to repair or replacement of any part found to be defective by CEEEO.

UNDER NO CIRCUMSTANCES shall CEEEO be liable for loss, damage, cost of repair or consequential damages of any kind, which have been caused by neglect, abuse or improper operation of equipment.

CEEEO will repair or replace any unit during this period if found to be defective for reasons other than abuse and improper use or improper installation. It is the buyer's responsibility to return the defective unit to the factory. CEEEO will then repair or replace any defective parts and return them to the buyer free of charge. CEEEO supplies replacement parts and offers repair service for the life of the product.

## REPAIR POLICY

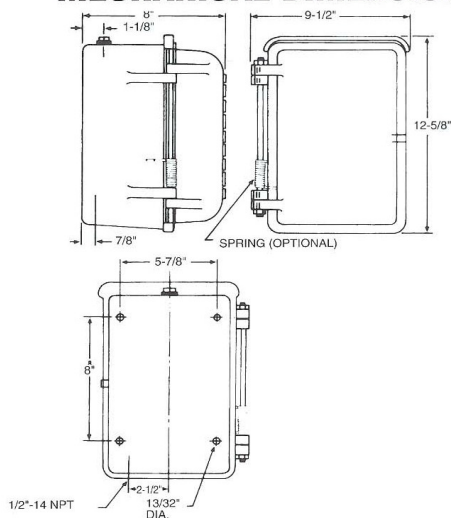
### WARRANTY REPAIR

Any device returned requiring warranty service, repair or credit must be accompanied with a "Return Material Authorization" (RMA) Form. It must include: RMA Number, return shipping instructions, original purchase order number, serial number and special marking instructions. A tag with the trouble observed must be attached to the defective unit. This information must be inside the shipping container.

### NON-WARRANTY REPAIR

CEEEO will repair equipment out of warranty for a set charge plus parts. The customer must pay the shipping costs both directions.

## MECHANICAL DIMENSIONS



*Providing Telecommunication Solutions Since 1930*

Communication Equipment  
& Engineering Company

<http://www.ceeco.net>

Email: [sales@ceeco.net](mailto:sales@ceeco.net)

519 SW Park Street  
Okeechobee, FL 34972

Voice 863-357-0798

Fax 863-357-0006