

HOB-531 SPEAKERPHONES

Stainless Steel, Vandal Resistant, Rugged Speakerphone Panels Built to Last

CEEEO HOB-531 Series is an open enclosure, weather resistant, handsfree speakerphone that is designed for both indoor and outdoor areas offering limited protection from the elements. Our handsfree phones are available with keypad (-F), autodial (-D), and ring-down (-X) operation. The speakerphone operation is a press to start, press to stop call button for the initiation and termination of phone calls with an LED visual call process indication light. Handsfree operation eliminates out of service complaints and costly repairs due to missing handsets. Automatic disconnect circuits ensure that the telephone will not be left in the "off-hook" position. The speakerphone can allow/disallow incoming calls as well as timed calls if desired. The telephone housing is powder coated steel or stainless steel with a high grade stainless steel panel to eliminate rust and corrosion which provides an attractive finish. The internal circuitry provides exceptional audio balancing and overall sound quality, as well as over-voltage protection to help guard against surging that might be generated by various conditions including storms. Our HOB-531 Series are built to last!



Made in the USA

FEATURES

Measurements:

11 1/2" H x 7 1/4" W x 5" D (top)

Weight 10 lbs

Painted (black or red) Steel or Stainless Steel Open Enclosure Housing

Stainless Steel Faceplate with Tamper Resistant Hardware

Available with keypad, autodial, or ring-down function.

Provides programmable call restrictions and speed dial

Over-voltage protection to help guard against surging

Line Powered

Requires 301-064 Security Tool for Installation

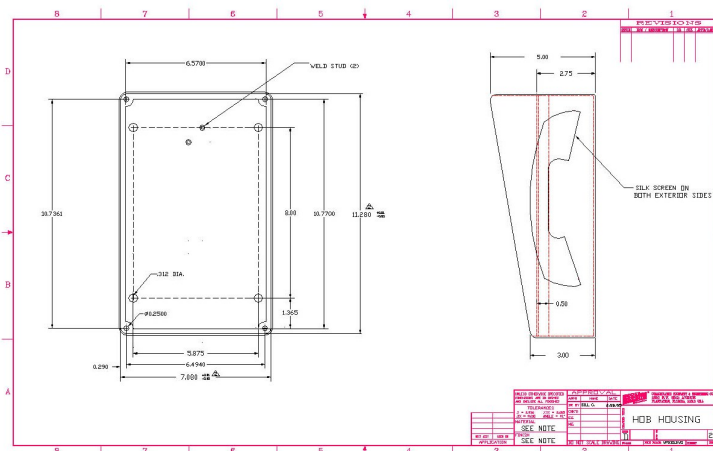
1 Year Warranty and Lifetime Support

SPECIFICATIONS

| | |
|----------------|--|
| POWER: | C.O. Line powered |
| LOOP CURRENT: | 30mA min. to 80mA max. |
| LOOP CURRENT: | 27mA min. to 80mA max. (low power) |
| IMPEDANCE: | 600 ohms |
| SIGNALING: | DTMF, 70ms tone, 50ms spacing |
| SIGNALING: | Manual on-off Hook (for 531-X) |
| OUTPUT: | -4.0dbm to -6.0dbm |
| ENVIRONMENTAL: | Temp: -30°C (-22°F) to 60°C (140°F) Humidity 0% to 90% non-condensating |
| FACEPLATE: | Brushed 16 ga. Stainless Steel |
| ENCLOSURE: | 14 ga. Painted Steel (red or black) or Brushed Stainless Steel |
| HOUSING: | 11.5" H x 7.25" W x 5" D (top) |
| PANEL: | 11.25" H x 7.05" W x 2.875" D |
| PROGRAMMING: | Via DTMF keypad. |
| MOUNTING: | Vertical surface mount |
| WEIGHT: | Approximately 10 Pounds |
| TYPE JACK: | RJ11C |

ACCESSORIES:

301-064 Security Tool (required for installation)



HOB-531 HOUSING SPECS

Providing Telecommunication Solutions Since 1930

Communication Equipment
& Engineering Company

Web: www.ceeco.net

Email: sales@ceeco.net

519 SW Park Street
Okeechobee, FL 34972

Voice 863-357-0798

Fax 863-357-0006



HOB-531 SPEAKERPHONES

PRODUCT MANUALS WITH FULL FEATURES AND FUNCTIONS AVAILABLE UPON REQUEST



[HOB-531-F](#)



[HOB-531-FD-ADA-SS](#)



[HOB-531-DD-ADA-R](#)



[HOB-531-D, HOB-531-D2](#)
[HOB-531-X](#)

The **HOB-531-F** speakerphone with keypad provides DTMF dialing and can be programmed for call restrictions and blocking, speed dial, conversation time-out, and PBX prefix dialing. The stainless steel design panel with puncture and weatherproof speaker, encased in a steel black painted open enclosure housing makes this speakerphone ideal for your toughest customers.

The **HOB-531-FD-ADA-SS** speaker phone installed in a stainless steel housing (-SS), provides call restriction capabilities to include call blocking. For example: block 1+ calling, can be programmed to dial an access code, allow or block incoming calls, provide separate conversation timers or no timed call for both autodial and keypad from 1 to 9 minutes, and adjustable wink detect length if necessary. Phone can not be left off-hook as it detects when the called party hangs up and resets itself.

The **HOB-531-DD-ADA-R** stainless steel two button auto dialer speaker phone is programmed to block or allow incoming calls, provide conversation time-out of either 1.5 minutes or 3 minutes or no time-out. This model is equipped with ADA features to include Braille 'EMER' emergency plate and LED call progress indicator light, and installed in a red painted steel open enclosure housing (-R).

The **HOB-531-D** stainless steel speakerphone equipped with tamper resistant security screws in a black painted, steel open enclosure housing with push button automatic dialer, can be programmed to dial a PBX access number, allow or block incoming calls, provide conversation time-out or no time-out. The **HOB-531-D2** will dial a second number if called party doesn't answer. The **HOB-531-X** is for ring down circuits, inbound calls, and direct connect applications.

HOB-530-F

FD Low power not available

DD Low Power not available

HOB-530-D OR X

The **HOB-530-F** is a low power consumption speakerphone with keypad that does not have the additional smart features. Full function ADA features are not available on low power models.

HOB-531-FD Programmable speakerphone is not available in a low power version. Please see above.

HOB-531-DD Programmable speakerphone is not available in a low power version. Please see above.

The **HOB-530-D OR X** available in low power speakerphones. Full function ADA features are not available on low power models. The **HOB-531-D2** telephone is not available in low power.

Dimensions:
11 1/2"H x 7 1/4"W x 5"D (top)

Dimensions:
11 1/2"H x 7 1/4"W x 5"D (top)

Dimensions:
11 1/2"H x 7 1/4"W x 5"D (top)

Dimensions:
11 1/2"H x 7 1/4"W x 5"D (top)

SMART FEATURES (available for 531 models — NOT for low power 530 models)

| | | | |
|------------|--------------------|------------------|--|
| -AA | Automatic Answer | -VA | Voice Announcement |
| -RP | Remote Programming | -AA-VA-RP | Any Combination or all Smart Features can be added |

IP - Voice over Internet Protocol Version available on all models (SIP)

CUSTOMIZATION - Call us for additional options and features

Visit our website at www.ceeco.net or call us at 863-357-0798 for detail specifications on any of our models.



CEECO offers custom design and branding to your specifications. Our commitment to providing expert service and support extends beyond the warranty of our product. We offer support for the life of the product! CEECO is devoted to giving you the quality and service you deserve.

Providing Telecommunication Solutions Since 1930

Communication Equipment
& Engineering Company

Web: www.ceeco.net

Email: sales@ceeco.net

519 SW Park Street
Okeechobee, FL 34972

Voice 863-357-0798

Fax 863-357-0006