


HOB-333 SMART SERIES

Open Enclosure, Vandal Resistant, Rugged Telephones Built to Last

The HOB-333 Smart series open enclosure, weather resistant telephone, designed for both indoor and outdoor areas that are not exposed directly to the elements, are for customers in need of CEECO's reliable, industrial quality phones with advanced capability. These phones go beyond standard telephone functionality by providing you with smart features to fit all of your courtesy, security, emergency, and public phone applications. Each unit contains a marine quality chrome keypad and hookswitch, armored cord handset with internal steel lanyard and swivel for added strength, tamper resistant screws, and mounting back plate for easy installation. Read about specific smart features like Call restrictions, speed-dial pre-programmed numbers, block or allow incoming calls, etc. on the next page to see which model fits your needs.



Made in the USA 

SPECIFICATIONS

INPUT POWER:	C.O. Line Powered
OUTPUT:	Varies—Please refer to Manual
LOOP CURRENT:	25mA min to 80mA max. (48 Volt loop)
IMPEDANCE:	600 ohms
SIGNALING:	DTMF, 70ms tone, 50ms spacing
HEARING AID	
COMPATIBLE:	Meets EIA standards
ENVIRONMENTAL:	Temperature: -30°C (-22°F) to 60°C (140°F) Humidity 0%-90% non-condensating
PROGRAMMING:	Via DTMF keypad
RINGER EQUIVALENCY:	0.4A
TYPE JACK:	RJ11C
FACEPLATE:	Brushed 16 ga. Stainless Steel
HOUSING:	11.5" H x 7.25" W x 5" D (top)
MOUNTING:	Vertical surface mount
MEMORY RETENTION:	Lithium battery, long life
WEIGHT:	10 lbs.
FCC & UL:	Certified

ACCESSORIES:

301-064 Security Tool (required for installation)



Communication Equipment
& Engineering Company

Web: www.ceeco.net

Email: sales@ceeco.net

Features

Measurements: 11 1/2"H x 7 1/4"W x 5"D (top)

Stainless Steel Construction with Tamper Resistant Hardware

Powder Coated Steel or Stainless Steel Housing with Stainless Steel Telephone Faceplate

Marine Quality Chrome Tone Dial, Swivel, and Hookswitch

Armored cord handsets with internal steel lanyard and swivel

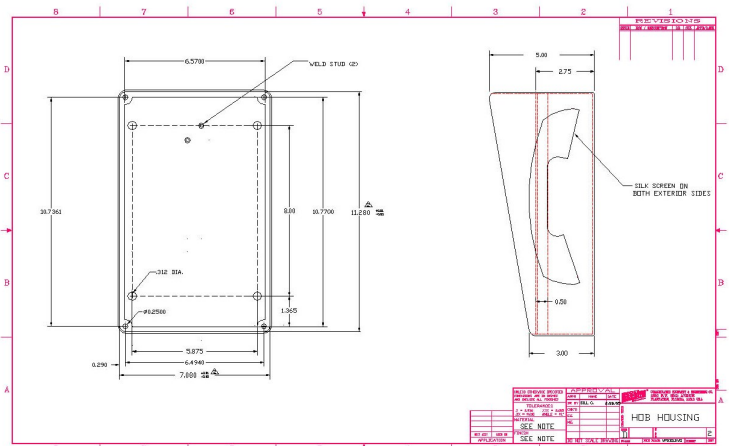
Equipped with ADT 1.03, CAC 6.00, OR SPD 2.01 Firmware

Smart Phone Feature details listed on next page

Requires 301-064 Security Tool

Line Powered

One Year Warranty and Lifetime Support



Providing Telecommunication Solutions Since 1930

519 SW Park Street
Okeechobee, FL 34972
Voice 863-357-0798
Fax 863-357-0006

HOB-333 SMART SERIES

PRODUCT MANUALS WITH FULL FEATURES AND FUNCTIONS AVAILABLE UPON REQUEST



HOB-333-E (ADT 1.03)

Microprocessor based telephone equipped with **ADT 1.03 FIRMWARE**. Keypad with two rows of six buttons, each programmed to dial a single number up to 23 digits in length. Label has an area provided to list call destinations next to relevant buttons. The transmitter stays muted (off) during periods of dial tone to deter the use of hand held dialers and hookswitch dialing. Attempts to make fraudulent calls are detected and blocked, causing the microprocessor to reset. Incoming calls may be allowed or blocked.



HOB-333-F-M-IVC-S (CAC 6.00)

Microprocessor based coinless telephone equipped with **CAC 6.00 FIRMWARE** is designed to withstand abuse and fraudulent call attempts while implementing call control. Microphone is muted to guard against fraud as well as select options for tone (DTMF) or pulse dialing. Call restriction features include: allowing or blocking incoming calls, speed dialing up to 40 pre-programmed numbers, automatically dialing one or two numbers when the handset is lifted (PBX or access number), and call blocking, for example, long distance calling and/or limiting call time duration.



HOB-333-F-M-R (SPD 2.01)

Microprocessor based telephone equipped with **SPD 2.01 FIRMWARE** is a speed dial telephone only. Designed to speed dial ninety-three (93) speed dial numbers from one (1) to eleven (11) digits in length. Telephone will not dial any other number except for the preprogrammed speed dial numbers. Incoming calls are not allowed and will be blocked. Speed dial numbers are programmed via the keypad and additional speed dial numbers may be added, deleted, or changed at any time.








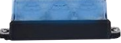
***Other softwares and features available, call for details. Customization is our specialty!**

Dimensions:
11 1/2"H x 7 1/4"W x 5"D
Weight: 10lbs
Product Link: [Click here](#)

Dimensions:
11 1/2"H x 7 1/4"W x 5"D
Weight: 10lbs
Product Link: [Click here](#)

Dimensions:
11 1/2"H x 7 1/4"W x 5"D
Weight: 10lbs
Product Link: [Click here](#)

ADDITIONAL OPTIONS

-M	-IVC	-ACH**	-ACH*	-CCH*	-ADA	-RIL	-RIS
							
Sealed Magnetic Hookswitch that uses standard handset. (no moving parts)	ADA comp-liant push button volume control and background noise red-ucer. (Built into phone)	Other Length armored cord from 12" to 72"(inches). Example: -ACH12 12" Long	ACHW -White Handset ACHR -Red Handset (Black is standard)	Coiled cord available from 5', 10', & 15' (feet). Example: -CCH5 5' Long	Braille "EMER PHONE" emergency Plate	Ring Indicator Light located on the phone panel for visual ring indication.	Ring Indicator Flashing Blue Light continuously lit and flashes during call duration (Requires AC Power)

Visit our website at www.ceeco.net or call us at 863-357-0798 for detail specifications on any of our models.

CEECO has been providing telecom solutions since 1930. Our vandal resistant technology focuses on providing public communication solutions while reducing replacement and repair costs, lowering the customer's total cost of ownership. CEECO also offers custom design and branding to your specifications. Our commitment to providing expert service and support extends beyond the warranty of our product. We offer support for the life of the product! CEECO is devoted to giving you the quality and service you deserve.



Providing Telecommunication Solutions Since 1930

Communication Equipment
& Engineering Company
Web: www.ceeco.net
Email: sales@ceeco.net

519 SW Park Street
Okeechobee, FL 34972
Voice 863-357-0798
Fax 863-357-0006