


# HOB-331-F TELEPHONE

**Open Enclosure, Vandal Resistant, Rugged Telephones Built to Last**

CEEEO model HOB-331-F is an open enclosure, weather resistant telephone that is designed for both indoor and outdoor areas that are not exposed directly to the elements. The unit is designed to operate as a standard telephone. The telephone housing is 14 gauge powder coated steel or stainless steel with a high grade 16 gauge stainless steel panel to eliminate rust and corrosion and to provide an attractive finish. The telephone is equipped with a marine quality, chrome plated keypad, mechanical or magnetic hookswitch, 32" hearing aid compatible armored cord handset, and tamper resistant hardware to protect the phone from vandalism and theft. The internal circuitry provides exceptional audio balancing and overall sound quality, as well as over-voltage protection to help guard against surging that might be generated by various conditions and weather. CEEEO's HOB-331-F Telephone provides dependable communication that is built to last!



Made in the USA 

## SPECIFICATIONS

INPUT POWER:	C. O. Line Powered
LOOP CURRENT:	23ma min to 80ma max
IMPEDANCE:	600 ohms
HEARING AID COMPATIBLE:	Meets EIA standards
ENVIRONMENTAL:	Temp: -30°C (-22°F) to 60°C (140°F) Humidity 0%-90% non-condensating
FACEPLATE:	Brushed 16 ga. Stainless Steel
ENCLOSURE:	14 ga. Painted Steel (red or black) or Brushed Stainless Steel
HOUSING:	11.5" H x 7.25" W x 5" D (top)
PANEL:	11.25" H x 7.05" W x 2.875" D
WEIGHT:	10 lbs.
FCC REGISTRATION:	BW88T7-13717-TE-T
UL LISTED NO.:	60F5
TYPE JACK:	RJ11C
RINGER EQUIVALENCY	0.4 A

## ACCESSORIES:

301-064

Security Tool  
(required for installation)



## Features

Designed for Rugged Indoor and Protected Outdoor Environments

I.D. Window or Built in Internal Volume Control available

Armored Cord, Hearing Aid Compatible, Industrial Strength Handset

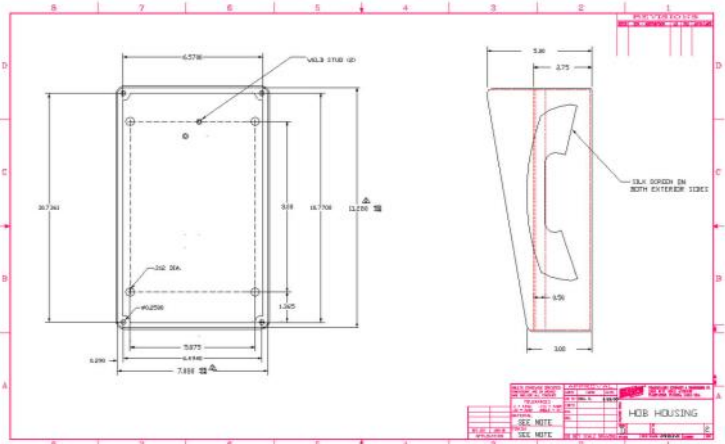
Powder Coated Steel or Stainless Steel Housing with Stainless Steel Faceplate

Marine Quality, Chrome Plated Hookswitch and Tone Dial Keypad

Analog or VoIP Telephone

Line Powered

1 Year Warranty and Lifetime Support



*Providing Telecommunication Solutions Since 1930*

Communication Equipment  
& Engineering Company

Web: [www.ceeco.net](http://www.ceeco.net)

Email: [sales@ceeco.net](mailto:sales@ceeco.net)

519 SW Park Street  
Okeechobee, FL 34972









Voice 863-357-0798

Fax 863-357-0006

# HOB-331-F TELEPHONE

PRODUCT MANUALS WITH FULL FEATURES AND FUNCTIONS AVAILABLE UPON REQUEST

				
<b>HOB-331-F</b>	<b>HOB-331-F-M-IVC-S</b>	<b>HOB-331-F-M-R</b>	<b>HOB-331-F-RIL</b>	<b>HOB-331-F-M-IVC-RIS</b>
Our standard vandal resistant, open enclosure telephone models with chrome tone keypad, 32" armored cord handset with steel lanyard, are specifically designed for areas subject to high use and abuse in both your indoor and outdoor locations.	The HOB-331-F-M-IVC-S model is equipped with the sealed magnetic hookswitch (M) & internal volume control (IVC) with background noise reduction button on the face of the stainless steel housing (S). The -IVC option gives added volume in noisy and busy environments.	The HOB-331-F-M-R model with the magnetic hookswitch (M) and a red (R) painted steel housing, is commonly used for emergency or public communication in parks, schools, hospitals, or any location where cell phones are rendered inoperable and the need for durable courtesy	The HOB-331-F-RIL model with a Ring Indicator Light (RIL) provides a visible indication that the phone is ringing. Popular in noisy and busy areas where it is necessary to visually see the phone ringing such as dormitory hallways, distribution centers, and	The HOB-331-F-M-IVC-RIS model with the magnetic hookswitch (M), internal volume control (IVC) and high visibility ring indicator strobe light (RIS) is commonly used in locations where recognition of phone activation is imperative, such as gas stations, airports, and other
<b>Dimensions:</b> 11 1/2"H x 7 1/4"W x 5"D <b>Weight:</b> 10lbs <b>Product Link:</b> <a href="#">Click here</a>	<b>Dimensions:</b> 11 1/2"H x 7 1/4"W x 5"D <b>Weight:</b> 10lbs <b>Product Link:</b> <a href="#">Click here</a>	<b>Dimensions:</b> 11 1/2"H x 7 1/4"W x 5"D <b>Weight:</b> 10lbs <b>Product Link:</b> <a href="#">Click here</a>	<b>Dimensions:</b> 11 1/2"H x 7 1/4"W x 5"D <b>Weight:</b> 10lbs <b>Product Link:</b> <a href="#">Click here</a>	<b>Dimensions:</b> 11 1/2"H x 7 1/4"W x 5"D <b>Weight:</b> 11lbs <b>Product Link:</b> <a href="#">Click here</a>

ADDITIONAL OPTIONS							
-M	-IVC	-ACH**	-ACH*	-CCH*	-BR	-RIL	-RIS
							
Sealed Magnetic Hookswitch that uses standard handset. (no moving parts)	ADA compliant push button volume control and background noise reducer. (Built into phone)	Other Length armored cord from 12" to 72"(inches). Example: -ACH12 12" Long	ACHW-White Handset ACHR-Red Handset (Black is standard)	Coiled cord available from 5', 10', & 15' (feet). Example: -CCH5 5' Long	Braille "EMER PHONE" emergency Plate	Ring Indicator Light located on the phone panel for visual ring indication.	Ring Indicator Flashing Blue Light continuously lit and flashes during call duration (Requires AC Power)

IP - Voice over Internet Protocol Version available on all models (SIP)

**CUSTOMIZATION** - Call us for additional options and features

Visit our website at [www.ceeco.net](http://www.ceeco.net) or call us at 863-357-0798 for detailed specifications on any of our models.

*CEECO has been providing telecom solutions since 1930. Our vandal resistant technology focuses on providing public communication solutions while reducing replacement and repair costs, lowering the customer's total cost of ownership. CEECO also offers custom design and branding to your specifications. Our commitment to providing expert service and support extends beyond the warranty of our product.*

*We offer support for the life of the product! CEECO is devoted to giving you the quality and service you deserve.*



Providing Telecommunication Solutions Since 1930

Communication Equipment  
& Engineering Company

Web: [www.ceeco.net](http://www.ceeco.net)

Email: [sales@ceeco.net](mailto:sales@ceeco.net)

519 SW Park Street  
Okeechobee, FL 34972

Voice 863-357-0798

Fax 863-357-0006