


HOB-331-D TELEPHONE

Open Enclosure, Vandal Resistant, Rugged Telephones Built to Last

CEECO model HOB-331-D is an open enclosure, weather resistant autodial telephone that is designed for both indoor and outdoor areas that have limited protection from the elements. The telephone housing is 14 gauge powder coated steel or stainless steel with a high grade 16 gauge stainless steel panel to eliminate rust and corrosion and to provide an attractive finish. The telephone is equipped with an ATD-11 automatic tone dialer that will dial a single number of up to eleven (11) digits. Also included is a mechanical or optional magnetic hookswitch, 32" hearing aid compatible armored cord handset, and tamper resistant hardware for added durability. The internal circuitry provides over-voltage protection to help guard against surging that might be generated by various conditions and weather which provides dependable communication built to last!



Made in the USA 

SPECIFICATIONS

INPUT POWER:	C.O. Line Powered
LOOP CURRENT:	23ma min to 80ma max
IMPEDANCE:	600 ohms
HEARING AID COMPATIBLE:	Meets EIA standards
ENVIRONMENTAL:	Temp: -30°C (-22°F) to 60°C (140°F) Humidity 0%-90% non-condensating
FACEPLATE:	Brushed 16 ga. Stainless Steel
ENCLOSURE:	14 ga. Painted Steel (red or black) or Brushed Stainless Steel
HOUSING:	11.5" H x 7.25" W x 5" D (top)
PANEL:	11.25" H x 7.05" W x 2.875" D
WEIGHT:	10 lbs.
FCC REGISTRATION:	BW88T7-13716-TE-T
UL LISTED NO.:	60F5
TYPE JACK:	RJ11C
RINGER EQUIVALENCY	0.4 A

ACCESSORIES:

301-064

Security Tool
(required for installation)



Features

Designed for Rugged Indoor and Protected Outdoor Environments

I.D. Window or optional Built in Internal Volume Control

Armored Cord, Hearing Aid Compatible, Industrial Strength Handset

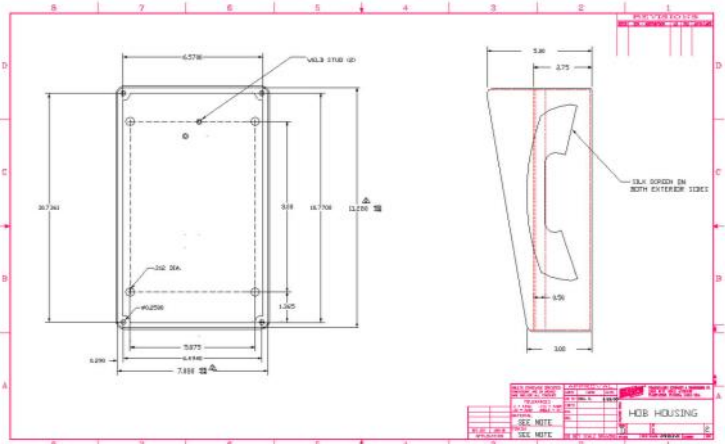
Powder Coated Steel or Stainless Steel Housing and Stainless Steel Telephone Panel

Marine Quality Mechanical or optional Magnetic Hookswitch

Analog or VoIP Telephone

Line Powered

1 Year Warranty and Lifetime Support



Providing Telecommunication Solutions Since 1930

Communication Equipment
& Engineering Company

Web: www.ceeco.net

Email: sales@ceeco.net

519 SW Park Street
Okeechobee, FL 34972








Voice 863-357-0798

Fax 863-357-0006

HOB-331-D TELEPHONE

PRODUCT MANUALS WITH FULL FEATURES AND FUNCTIONS AVAILABLE UPON REQUEST

				
HOB-331-D	HOB-331-D-M-IVC-S	HOB-331-D-M-R	HOB-333-DD	HOB-331-D-RIS
Our HOB-331-D autodial model, programmable from 1-11 digits, in a weather resistant open enclosure housing, is great for partial outdoors and public use in areas subject to high use & abuse. Equipped with 16 gauge stainless steel vandal resistant panel and 32" armored cord handset makes this phone attractive and extremely sturdy.	The HOB-331-D-M-IVC-S model is equipped with the sealed magnetic hookswitch (M) & internal volume control with background noise reduction button (IVC) on stainless steel panel, encased in a stainless steel housing (S). This phone is commonly used in environments where resisting moisture, dust and corrosive chemicals are essential.	The HOB-331-D-M-R model with the magnetic hookswitch (M) and a red (R) painted steel housing, is commonly used for emergency in parks, schools, hospitals, or any location where cell phones are rendered inoperable and the need for an emergency phone is necessary.	The HOB-333-DD model is equipped with MRCK2 smart card, which provides 2-push button auto-dialing and can be programmed to block or allow incoming calls. It is commonly used in areas that require designated or restricted calls to specific locations.	The HOB-331-D-RIS model equipped with high visibility ring indicator strobe light (RIS) is commonly used in locations where recognition of phone activation is imperative, such as gas stations, airports, and other critical areas.
Dimensions: 11 1/2"H x 7 1/4"W x 5"D Weight: 10lbs Product Link: Click here	Dimensions: 11 1/2"H x 7 1/4"W x 5"D Weight: 10lbs Product Link: Click here	Dimensions: 11 1/2"H x 7 1/4"W x 5"D Weight: 10lbs Product Link: Click here	Dimensions: 11 1/2"H x 7 1/4"W x 5"D Weight: 10lbs Product Link: Click here	Dimensions: 11 1/2"H x 7 1/4"W x 5"D Weight: 11lbs Product Link: Click here

ADDITIONAL OPTIONS							
-M	-IVC	-ACH**	-ACH*	-CCH*	-BR	-RIL	-RIS
							
Sealed Magnetic Hookswitch that uses standard handset. (no moving parts)	ADA compliant push button volume control and background noise reducer. (Built into phone)	Other Length armored cord from 12" to 72"(inches). Example: -ACH12 12" Long	ACHW -White Handset ACHR -Red Handset (Black is standard)	Coiled cord available from 5', 10', & 15' (feet). Example: -CCH5 5' Long	Braille "EMER PHONE" emergency Plate	Ring Indicator Light located on the phone panel for visual ring indication.	Ring Indicator Flashing Blue Light continuously lit and flashes during call duration (Requires AC Power)

IP - Voice over Internet Protocol Version available on all models (SIP)

CUSTOMIZATION - Call us for additional options and features

Visit our website at www.ceeco.net or call us at 863-357-0798 for detailed specifications on any of our models.

CEECO has been providing telecom solutions since 1930. Our vandal resistant technology focuses on providing public communication solutions while reducing replacement and repair costs, lowering the customer's total cost of ownership. CEECO also offers custom design and branding to your specifications. Our commitment to providing expert service and support extends beyond the warranty of our product.

We offer support for the life of the product! CEECO is devoted to giving you the quality and service you deserve.



Providing Telecommunication Solutions Since 1930

Communication Equipment & Engineering Company

Web: www.ceeco.net

Email: sales@ceeco.net

519 SW Park Street
Okeechobee, FL 34972

Voice 863-357-0798

Fax 863-357-0006